

PUBLIC VALUE STATEMENT

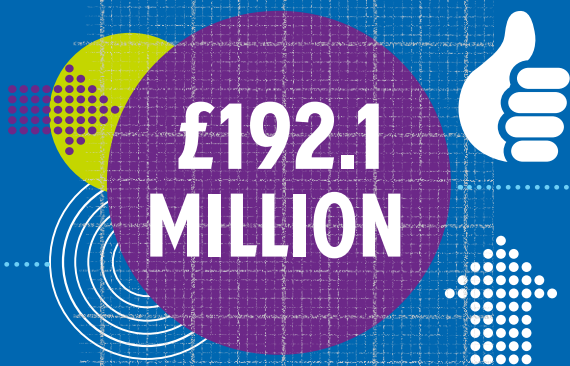
BSDC is committed to ensuring it provides the best return on investment for the communities we serve.

BSDC recognise the significant impact and contribution we continually make to the varied communities which we serve. We also recognise our responsibilities in ensuring we do this with transparency, openness and professionalism and provide maximum value and returns in the use of public funds. Currently, our key value metrics are;

SOCIAL AND ECONOMIC IMPACT

BENEFITS TO LEARNERS

IN RETURN FOR THE MONIES THAT LEARNERS INVEST IN BSDC, THEY WILL RECEIVE A PRESENT VALUE OF



IN INCREASED EARNINGS OVER THEIR WORKING LIVES.

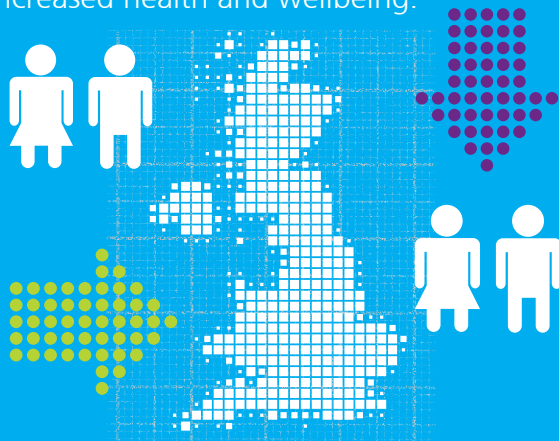
Every **£1** that learners pay for their education at BSDC yields **£4.70** in higher future wages.

This translates to a **16.6%** annual return on their investment.

BENEFITS TO SOCIETY

Society as a whole invested **£93.3 MILLION** in BSDC through direct outlays and the loss of potential output from learners who spent time at the College rather than working.

In return, society in the UK will receive a present value of **£489.3 MILLION** over the course of the learners' working lives, in the form of an expanded tax base and a variety of social benefits related to reduced crime, lower unemployment and increased health and wellbeing.



BENEFITS TO TAX PAYERS

Society will receive **£5.40** in benefits in return for every **£1** invested in BSDC.

The net present value of the added tax revenue stemming from the learners' higher lifetime incomes and the increased output of business amounts to

£86 MILLION

in benefits to taxpayers. Avoided costs to the public sector adds another **£3.2 MILLION** in benefits due to a reduced demand for government-funded social services in the UK.

IMPACT OF STAFF AND COLLEGE EXPENDITURE

BSDC learners who relocate to East Staffordshire and South Derbyshire from outside of the area spend money at local shops to buy books and supplies, purchase groceries, rent accommodation, pay for transport, attend sporting events etc.

THE EXPENDITURE OF BSDC'S NON-LOCAL LEARNERS ANNUALLY ADDS APPROXIMATELY



IN INCOME TO EAST STAFFORDSHIRE AND SOUTH DERBYSHIRE'S ECONOMY.

IMPACT OF ADDED WORKFORCE

Many of BSDC's learners stay in East Staffordshire and South Derbyshire. Their enhanced skills and abilities bolster the output of local employers, leading to higher regional income and a more robust economy.

The accumulated impact of former BSDC learners who are currently employed in the regional workforce amounts to

£176 MILLION

in added income in East Staffordshire and South Derbyshire's economy each year.

TOTAL IMPACT ON LOCAL BUSINESS COMMUNITY

Altogether, the economic contribution of BSDC to the local business community in East Staffordshire and South Derbyshire is

£189.9 MILLION each year.

Total added income created by the College and its learners is equal to 0.5% of the total economic output of East Staffordshire and South Derbyshire, and represents roughly 8,207 average wage jobs.

*Source: Burton and South Derbyshire College Economic Impact Study, EMSI, May 2018